

Company Update...

At Highline, we take pride in all projects we complete, no matter the complexity or the value. To maintain this, Highline has divided into two divisions – Specialised Works and Capital Projects with a specialised dedicated team appointed to each area. Across, we have highlighted some key successes within both areas throughout the last 5 years.

CAPITAL PROJECTS

"Capital Projects focuses on all projects valued between £200,000 and £5 million, with a motivated team dedicated from tender stage through to final handover. Our team is complete of highly skilled members who can complete a variety of projects including infrastructure, fit out, refurbishments, healthcare, pharmaceuticals and more at a competitive rate."



Neal Kavanagh
Project Director

CP

SPECIALISED WORKS

"Specialised Works takes pride on all projects between £0 and £200,000, ensuring health, safety and quality practices remain at an excellent standard regardless of the size of project. We are responsive and reactive to turn projects around quickly at the clients request with a focus on cost to quality ratio."



Jon Adams
Head of Specialised Projects

SW



CP

GOODS IN AND PEDESTRIAN SEGREGATION REFRESH



SW

INSTALLATION OF PENDANT



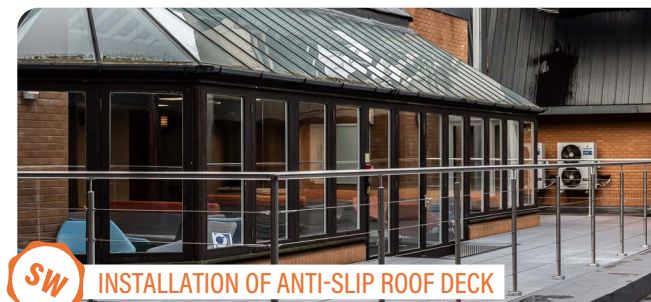
WC INSTALLATION

SW



D&B WATER FEATURE REFRESH

CP



SW

INSTALLATION OF ANTI-SLIP ROOF DECK



SW

CONVERSION OF 1 LAB SPACE INTO 2



SW

STAFF CANTEEN UPGRADE



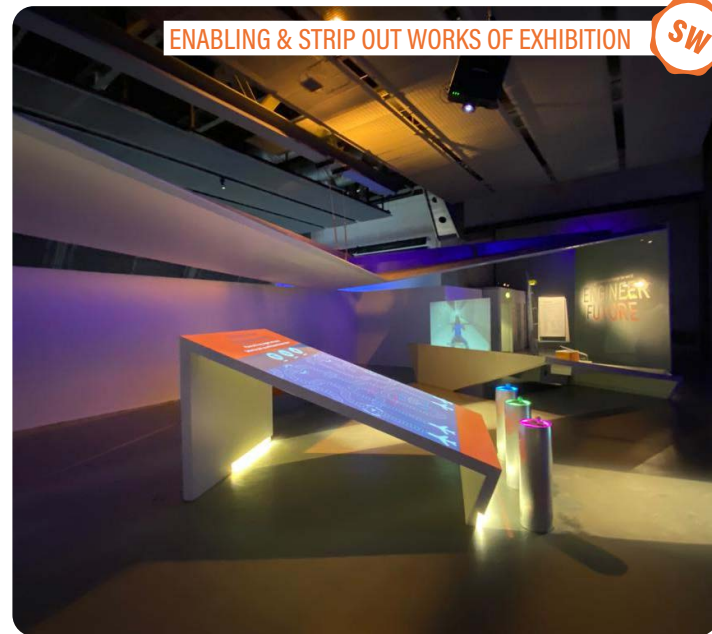
SW

OFFICE REFRESH & UPGRADE



MRI & FARADAY CAGE INSTALL

CP



ENABLING & STRIP OUT WORKS OF EXHIBITION

SW



INSTALLATION OF MICRO-MARKET

SW



GYM REFRESH & INSTALL

SW



REFURBISHMENT TO OFFICE AREAS & LAB

CP



CRANE LIFT

CP



TRADE EFFLUENT TANK REFURB

CP



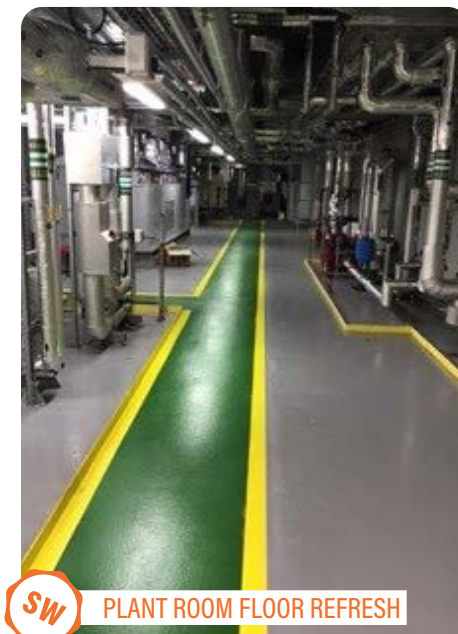
DOOR INSTALLATION

SW



RECEPTION AND WAITING AREA UPGRADE

CP



PLANT ROOM FLOOR REFRESH

SW



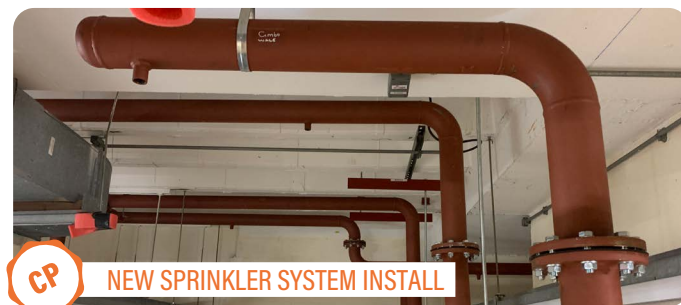
FLOORING REPLACEMENT

SW



X3 LAB RECONFIGURATIONS

CP



NEW SPRINKLER SYSTEM INSTALL

CP



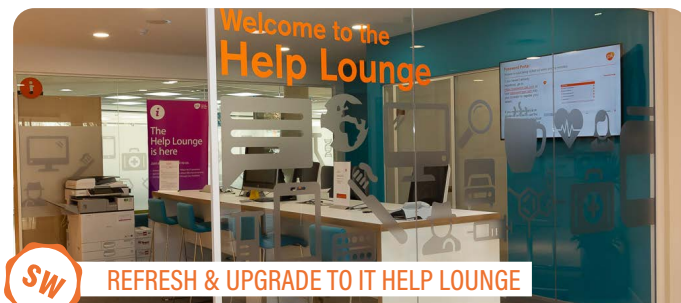
MRI INSTALLTION

CP



LAB COLOCATION

CP



REFRESH & UPGRADE TO IT HELP LOUNGE

SW



CANTEEN REFRESH & UPGRADE

SW